

SPRING GARDENS

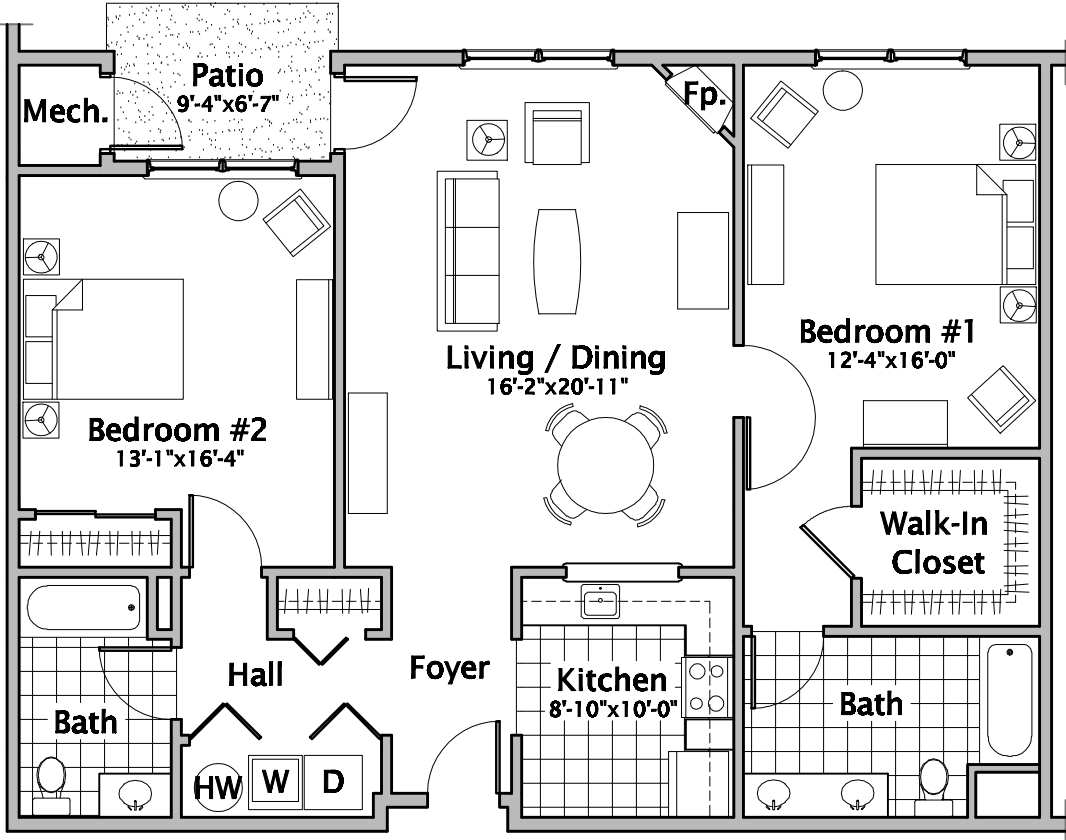
**BOROUGH OF
NEW PROVIDENCE
Union County, New Jersey**

UNIT A

1,295 Square Feet

**Two Bedrooms, Two Full Baths
Apt. #105, #106, #107, #108,
#206, #211
Unit A First Floor - patio
Unit A Second Floor - balcony**

*Dimensions are approximate
and subject to change.*



FLOOR PLAN



**C E R M I N A R A
A R C H I T E C T**
Hillsborough New Jersey
02070.05 10 DEC 07