

# SPRING GARDENS

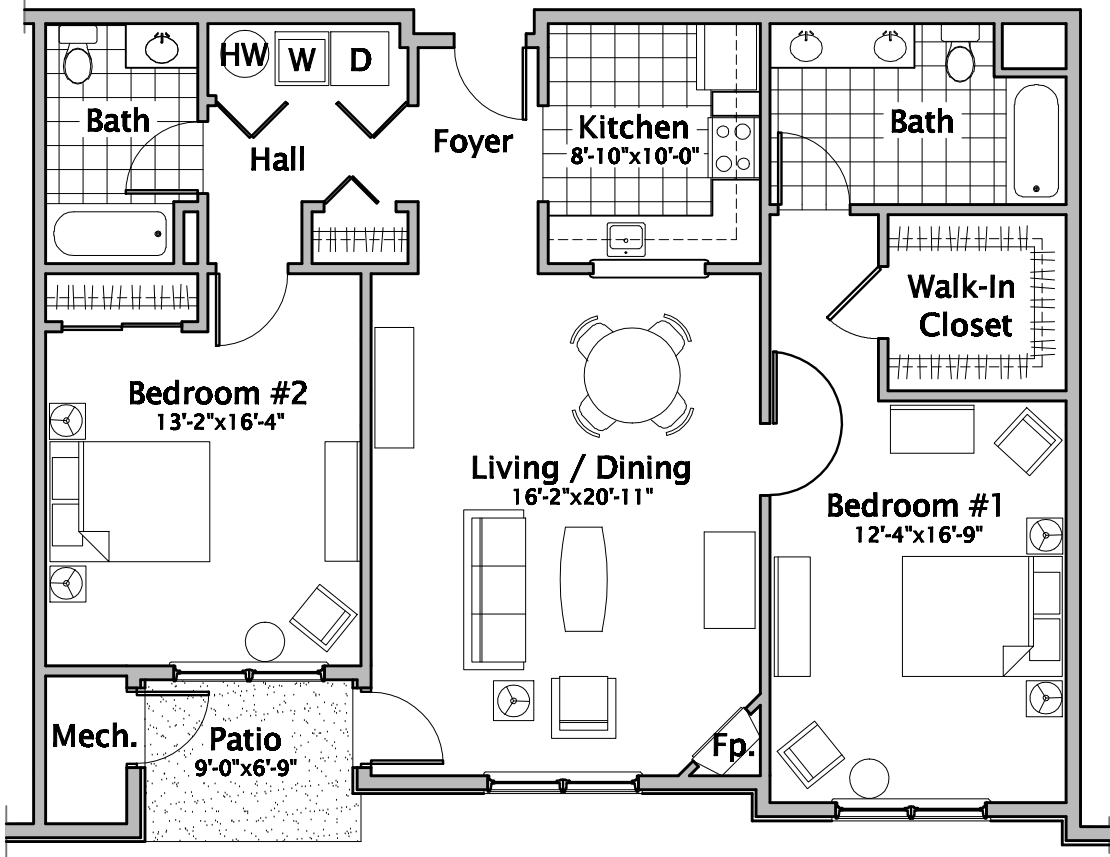
**BOROUGH OF  
NEW PROVIDENCE  
Union County, New Jersey**

## UNIT B

**1,317 Square Feet**

**Two Bedrooms, Two Full Baths  
Apt. #101, #112, #202, #215  
Unit B First Floor - patio  
Unit B Second Floor - balcony**

*Dimensions are approximate  
and subject to change.*



## FLOOR PLAN



**C E R M I N A R A  
A R C H I T E C T**  
Hillsborough New Jersey  
02070.05 10 DEC 07