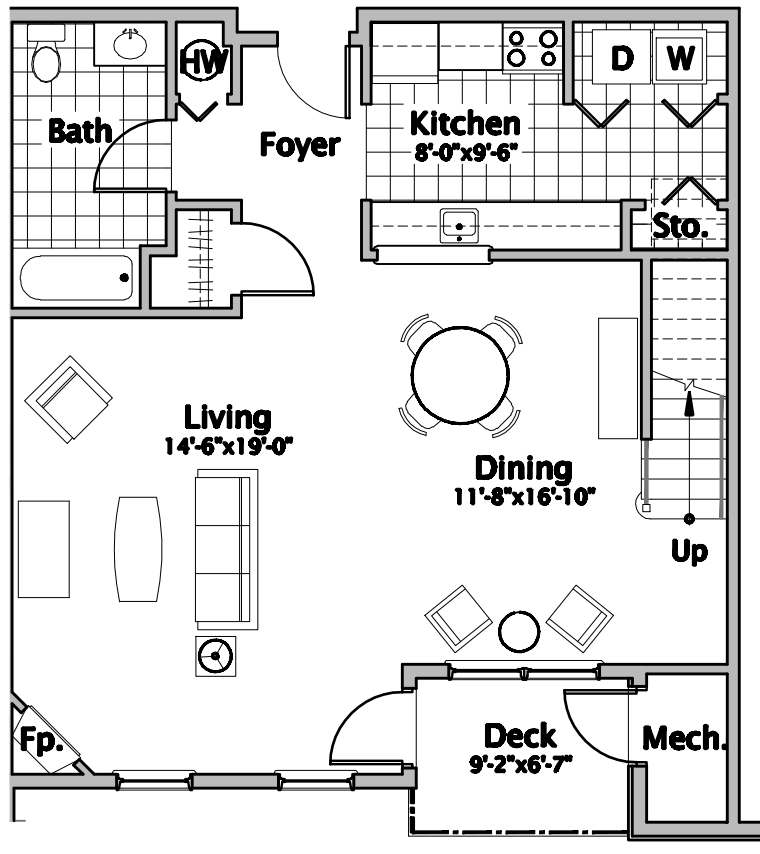
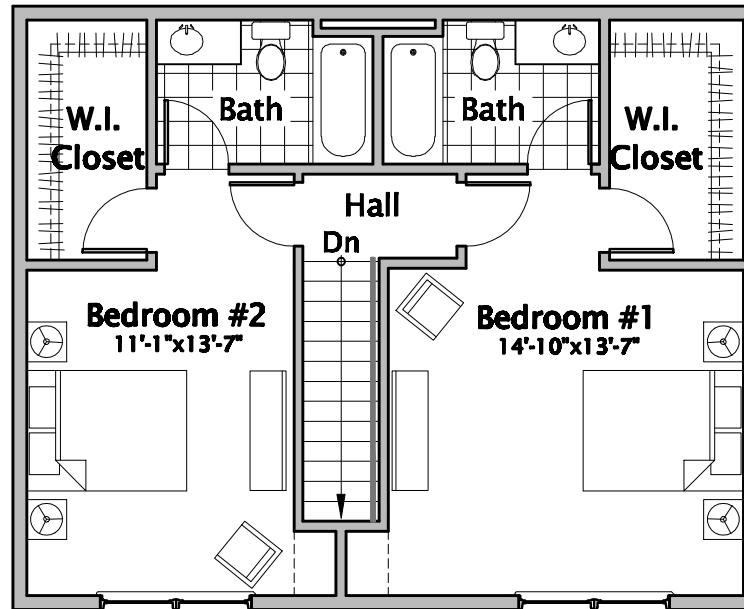


**SPRING GARDENS**  
**BOROUGH OF**  
**NEW PROVIDENCE**  
**Union County, New Jersey**



**FIRST FLOOR PLAN**



**SECOND FLOOR PLAN**

**UNIT G**

**1,617 Square Feet**

**Two Bedrooms, Three Full Baths**  
**Apts. #203, #214**

*Dimensions are approximate  
and subject to change.*

**FLOOR PLAN**

