

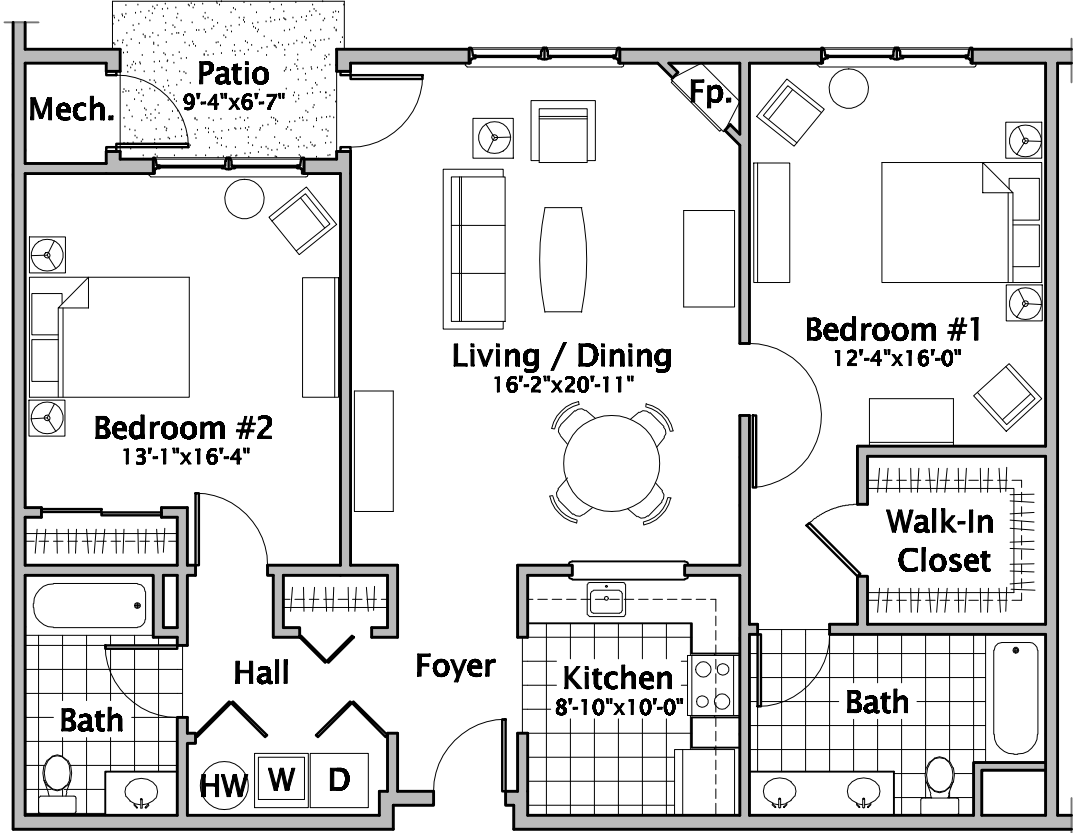
**SPRING GARDENS**  
**BOROUGH OF**  
**NEW PROVIDENCE**  
**Union County, New Jersey**

**UNIT A**

**1,295 Square Feet**

**Two Bedrooms, Two Full Baths**  
**Apt. #105, #106, #107, #108,**  
**#206, #211**  
**Unit A First Floor - patio**  
**Unit A Second Floor - balcony**

*Dimensions are approximate  
and subject to change.*



**FLOOR PLAN**



**C E R M I N A R A**  
**A R C H I T E C T**  
Hillsborough New Jersey  
02070.05 10 DEC 07