

SPRING GARDENS

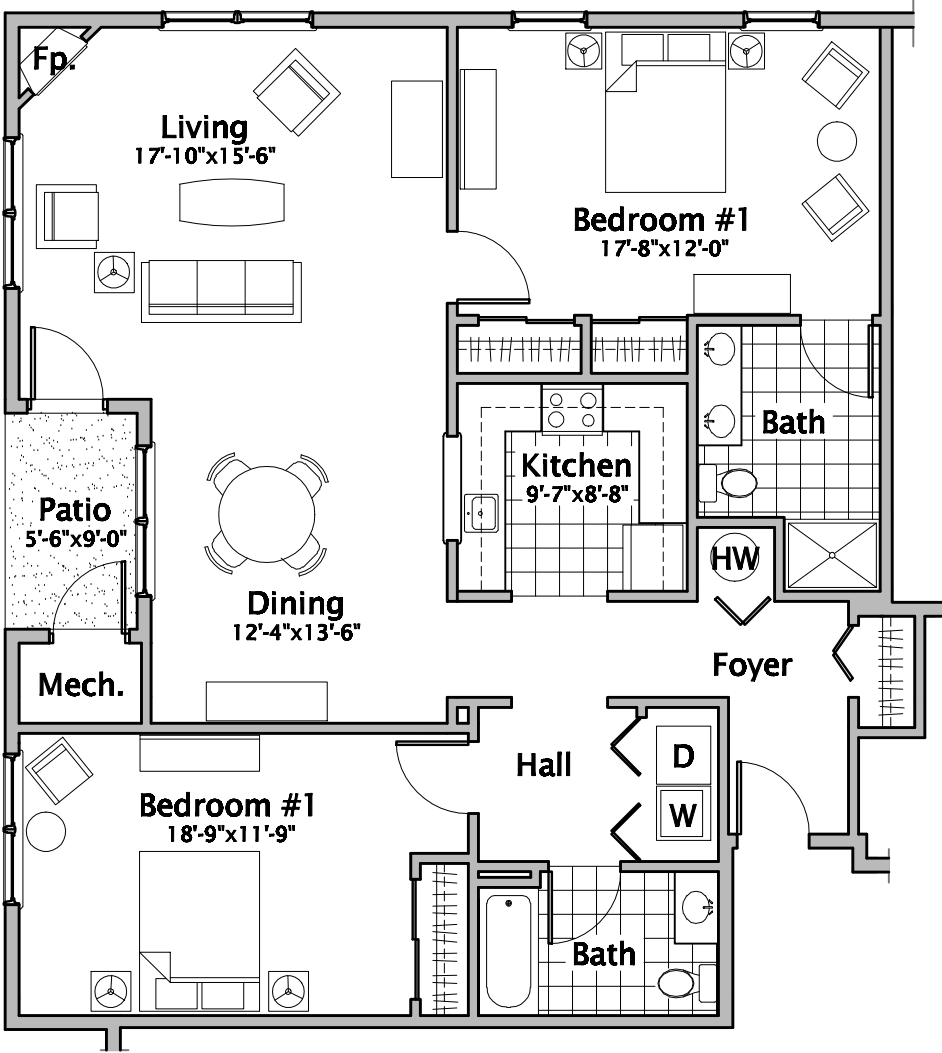
**BOROUGH OF
NEW PROVIDENCE
Union County, New Jersey**

UNIT E

1,369 Square Feet

**Two Bedrooms, Two Full Baths
Apts. #104, #109, #205, #212
Unit E First Floor - porch
Unit E Second Floor - balcony**

*Dimensions are approximate
and subject to change.*



FLOOR PLAN



**C E R M I N A R A
A R C H I T E C T**
Hillsborough New Jersey
02070.05 10 DEC 07